

#### NOTE

- When inserting batteries, make sure that the polarity (+/-) is correct.
- The LED on the top of the remote is a visual indicator that confirms the remote has power when a button is pressed.
- Your remote may vary slightly from the one pictured here. However, basic functions should remain the same.

#### To force remote control to send volume control commands to the TV

1. Press and hold **Setup** button until the LED Indicator turns green.
2. Press the **volume up** button

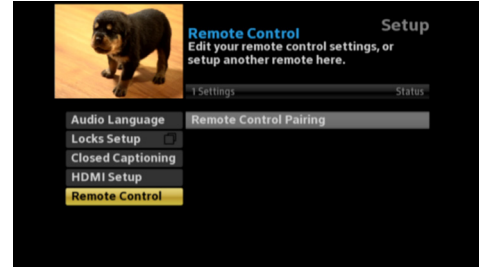
#### To force remote control to send volume control commands to the HD STB

1. Press and hold **Setup** button until the LED Indicator turns green.
2. Press the **volume down** button

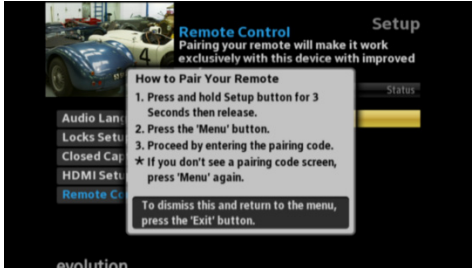
**Note:** Refer to the Remote Control Programming and Operating instructions, provided with your remote control, to program your remote to work on your TV and for more detailed information regarding pairing your remote.

## Pair your remote control with your HD STB to install it out of sight

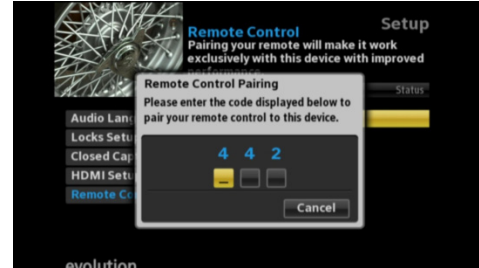
Your remote control can be paired directly with your HD STB, allowing you to place the device out of sight (in an entertainment center or behind your TV, for example). Once your remote is paired to a specific HD STB, it will not control any other set-top box in your home.



1. Press the **Menu** button.
2. Select Remote Control and then select **Remote Control Pairing**.



3. Press and hold **Setup** button until the LED Indicator turns green.
4. Press the **Menu** button.  
Please allow a few seconds for the menu to display



5. Proceed by entering the pairing code displayed in blue on the pairing code pop-up screen.

**Note:** If you don't see a pairing code screen, repeat steps 1 and 2.

### TO REMOVE REMOTE CONTROL PAIRING (FORCE UNPAIR)

If you would like to use your remote control for a different set-top box, you must first un-pair the remote control from the current device. Follow the steps below to remove the pairing.

- 1 Press and hold the Setup button for 3 seconds until the LED Indicator turns green.
- 2 Enter 9-8-7 on the remote control.
- 3 The LED Indicator will blink green twice.

### TO RESET THE TV IR CODE

- 1 Press and hold the Setup button for 3 seconds until the LED Indicator turns green.
- 2 Enter 9-8-6 on the remote control.
- 3 The LED Indicator will blink green twice.

### TO FACTORY RESET THE REMOTE CONTROL UNIT

- 1 Press and hold the Setup button for 3 seconds until the LED Indicator turns green.
- 2 Enter 9-8-1 on the remote control.
- 3 The LED Indicator will blink green twice.